

# DESIGNED FOR BEAUTY. BUILT TO WEATHER LIFE.

Weatherwell Aluminium shutters are an unprecedented product and can take your home to a whole new level of style. Quite simply, they combine beauty, durability and versatility and can transform your home and the way you live.

Unlike any other shutters, they allow you to combine indoor and outdoor living, have the ability to weather any storm, can enhance your home with elegance and style and open up possibilities to create additional rooms by enclosing spaces.

## THE WEATHERWELL DIFFERENCE

### Quality & Elegance

Weatherwell shutters are defined by quality and elegance.

### Bring The Outside In

Weatherwell shutters help you maximise and utilise your indoor and outdoor living spaces.

### A Flexible Option

Weatherwell shutters are versatile and can be ordered to fit any window size.

### Peace Of Mind

Weatherwell shutters are strong and durable and are built to weather life.

Contact one of our sales agents today to find out how Weatherwell shutters can transform your home and you will soon be the envy of all your neighbours.

BE  
THE ENVY  
OF ALL YOUR  
NEIGHBOURS

YOU CAN ALSO CONTACT US ABOUT OUR RANGE OF TIMBER SHUTTERS

**ACCENT BLINDS**  
SINCE 1987

Visit our Showroom: Royce Court, Joondalup WA 6027

Phone: 9301 2919 | Fax: 9301 2818 | Mobile: 0403 387 719

Email: [accentblindswa@bigpond.com](mailto:accentblindswa@bigpond.com) | Website: [www.accentblindswa.com.au](http://www.accentblindswa.com.au)



# Weatherwell

## DESIGNED FOR BEAUTY. BUILT TO WEATHER LIFE.

The Weatherwell Aluminium Shutter Collection is perfectly situated to bring indoor and outdoor spaces closer together. Combining strength, security and flexibility, aluminium shutters are the highlight of the Alfresco living movement. Providing the right mix of light, airflow and temperature control, this window solution allows you to maximise your available space without sacrificing the existing design elements of your home. This unique product is available in multiple blade sizes, fixed or moving louvres and an array of designer finishes.



MULTI-FOLD



HINGED



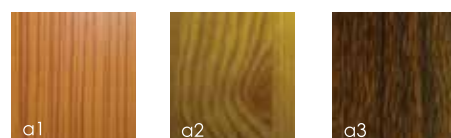
SLIDING



FIXED

## WEATHERWELL ALUMINIUM OPTIONS

### TIMBER GRAIN FINISHES



### Timber Grain Finishes

- a1. Light Cedar
- a2. Golden Oak
- a3. Walnut

### Available Security Options

- Flush Bolt
- Double Shoot Bolt
- Security Bolt
- Lockable Handle

### STANDARD COLOUR OPTIONS



### Standard Colour Options

- b1. White
- b2. Pearl
- b3. Silver
- b4. Black

### Blade Sizes

- 64mm, 89mm, 114mm

### Extras

- Blade Lock
- Fly Screen

### MULTI-FOLD INSTALLATION

This is the most flexible of all the installation types. You will have the exciting option of completely folding the shutters away from the opening when a non obstructed view is desired.

### SLIDING INSTALLATION

Sliding shutters are a great when you need to cover sliding doors, enclose balconies or any other outdoor area.

### HINGED INSTALLATION

A beautiful alternative to timber. It is a great choice when kids and pets are a factor and in high traffic areas.

### FIXED INSTALLATION

An excellent option when shutters are not required to be removed from an opening and only the blades need to be operated.





BE  
THE ENVY  
OF ALL YOUR  
NEIGHBOURS



# DESIGNED FOR BEAUTY. BUILT TO WEATHER LIFE.

Weatherwell Aluminium shutters are an unprecedented product and can take your home to a whole new level of style. Quite simply, they combine beauty, durability and versatility and can transform your home and the way you live.

Unlike any other shutters, they allow you to combine indoor and outdoor living, have the ability to weather any storm, can enhance your home with elegance and style and open up possibilities to create additional rooms by enclosing spaces.

## THE WEATHERWELL DIFFERENCE

### **Quality & Elegance**

Weatherwell shutters are defined by quality and elegance.

### **Bring The Outside In**

Weatherwell shutters help you maximise and utilise your indoor and outdoor living spaces.

### **A Flexible Option**

Weatherwell shutters are versatile and can be ordered to fit any window size.

### **Peace Of Mind**

Weatherwell shutters are strong and durable and are built to weather life.

Contact one of our sales agents today to find out how Weatherwell shutters can transform your home and you will soon be the envy of all your neighbours.

YOU CAN ALSO CONTACT US ABOUT OUR RANGE OF TIMBER SHUTTERS

**ACCENT BLINDS**  
SINCE 1987

**Visit our Showroom:** Royce Court, Joondalup WA 6027

**Phone:** 9301 2919 | **Fax:** 9301 2818 | **Mobile:** 0403 387 719

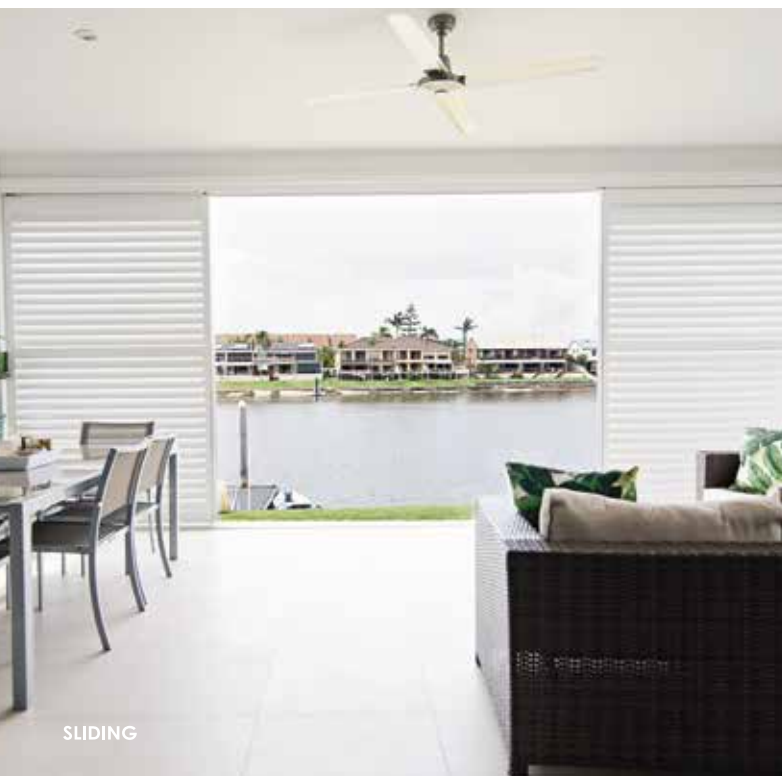
**Email:** [accentblindswa@bigpond.com](mailto:accentblindswa@bigpond.com) | **Website:** [www.accentblindswa.com.au](http://www.accentblindswa.com.au)



MULTI-FOLD



HINGED



SLIDING



FIXED

## MULTI-FOLD INSTALLATION

This is the most flexible of all the installation types. You will have the exciting option of completely folding the shutters away from the opening when a non obstructed view is desired.

## SLIDING INSTALLATION

Sliding shutters are a great when you need to cover sliding doors, enclose balconies or any other outdoor area.

## HINGED INSTALLATION

A beautiful alternative to timber. It is a great choice when kids and pets are a factor and in high traffic areas.

## FIXED INSTALLATION

An excellent option when shutters are not required to be removed from an opening and only the blades need to be operated.





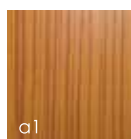
# Weatherwell

DESIGNED FOR BEAUTY.  
BUILT TO WEATHER LIFE.

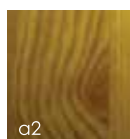
The Weatherwell Aluminium Shutter Collection is perfectly situated to bring indoor and outdoor spaces closer together. Combining strength, security and flexibility, aluminium shutters are the highlight of the Alfresco living movement. Providing the right mix of light, airflow and temperature control, this window solution allows you to maximise your available space without sacrificing the existing design elements of your home. This unique product is available in multiple blade sizes, fixed or moving louvres and an array of designer finishes.

## WEATHERWELL ALUMINIUM OPTIONS

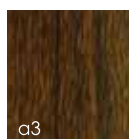
### TIMBER GRAIN FINISHES



a1



a2

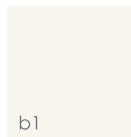


a3

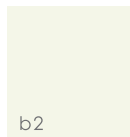
### Timber Grain Finishes

- a1. Light Cedar
- a2. Golden Oak
- a3. Walnut

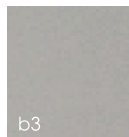
### STANDARD COLOUR OPTIONS



b1



b2



b3



b4

### Standard Colour Options

- b1. White
- b2. Pearl
- b3. Silver
- b4. Black

### Available Security Options

- Flush Bolt
- Double Shoot Bolt
- Security Bolt
- Lockable Handle

### Blade Sizes

64mm, 89mm, 114mm

### Extras

- Blade Lock
- Fly Screen